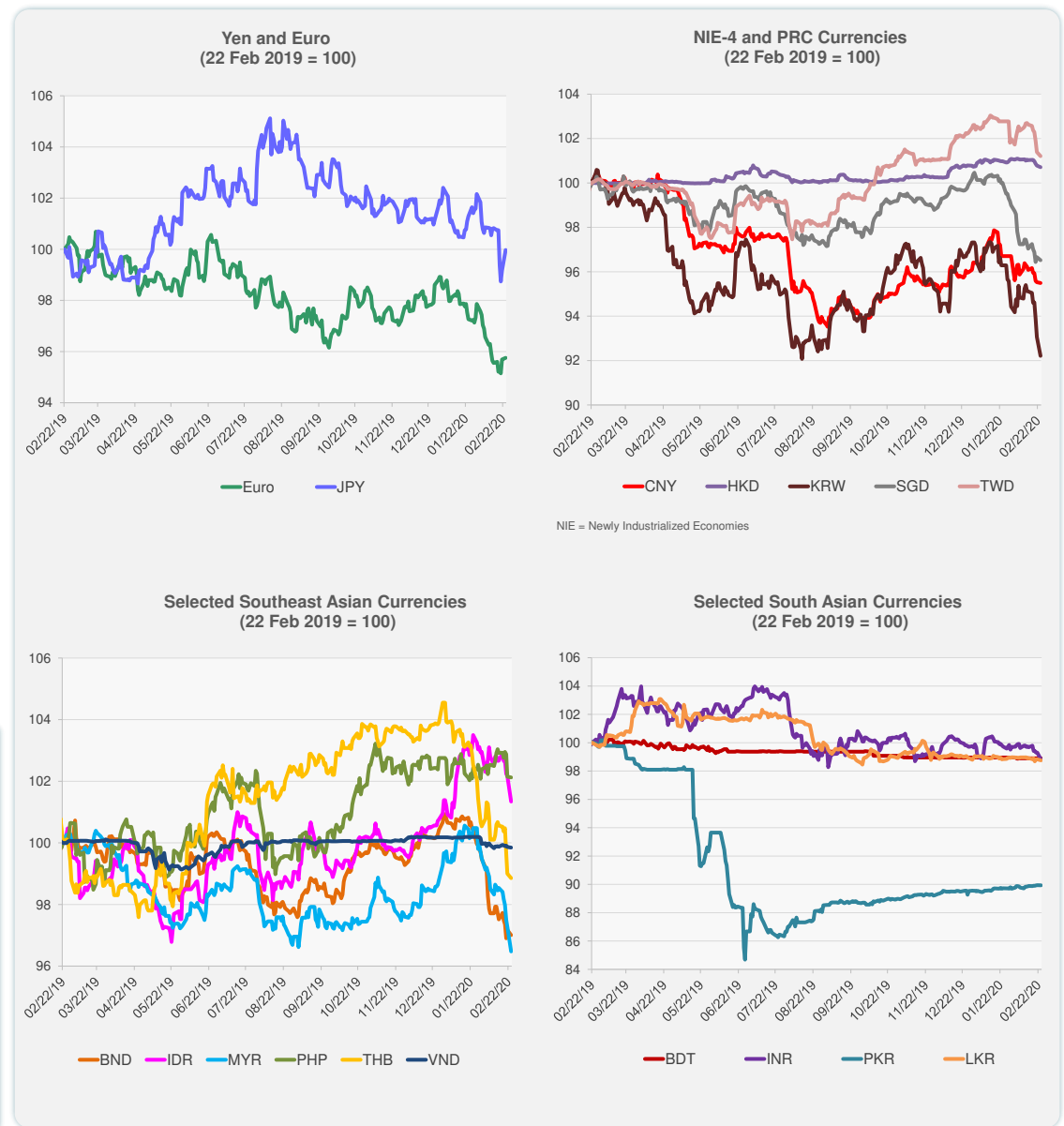
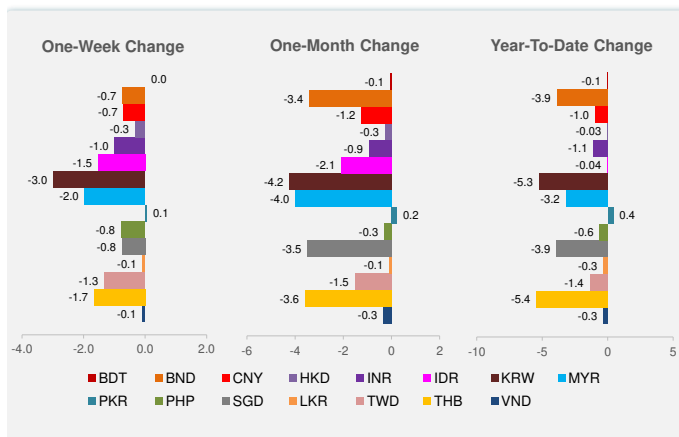


	Latest Closing	% change from Previous Day	% change from 01-Jan-20
Euro	0.92	0.06	-3.19
Japanese yen (JPY)	110.72	0.80	-1.77
Bangladeshi taka (BDT)	84.93	0.00	-0.06
Brunei dollar (BND)	1.40	-0.17	-3.89
Chinese yuan (CNY)	7.03	-0.04	-0.96
Hong Kong dollar (HKD)	7.79	-0.07	-0.03
Indian rupee (INR)	72.00	-0.50	-1.07
Indonesian rupiah (IDR)	13,872.00	-0.81	-0.04
Korean won (KRW)	1,220.35	-0.92	-5.25
Malaysian ringgit (MYR)	4.23	-0.83	-3.21
Pakistan rupee (PKR)	154.23	-0.01	0.43
Philippine peso (PHP)	50.96	-0.03	-0.61
Singapore dollar (SGD)	1.40	-0.14	-3.92
Sri Lanka rupee (LKR)	181.75	-0.08	-0.32
Taipei,China NT dollar (TWD)	30.45	-0.18	-1.37
Thai baht (THB)	31.69	-0.15	-5.45
Vietnamese dong (VND)	23,251.00	-0.02	-0.34

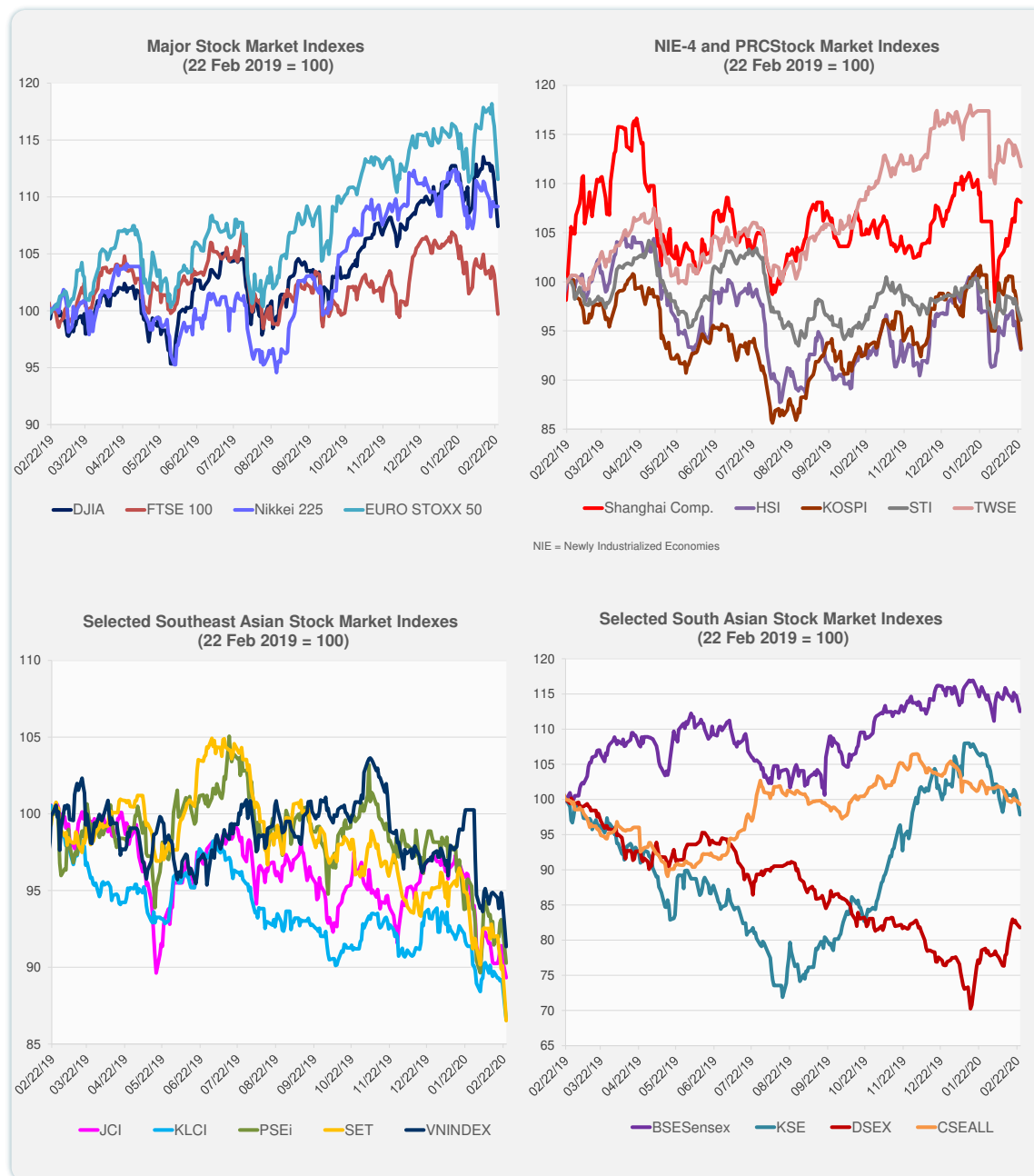
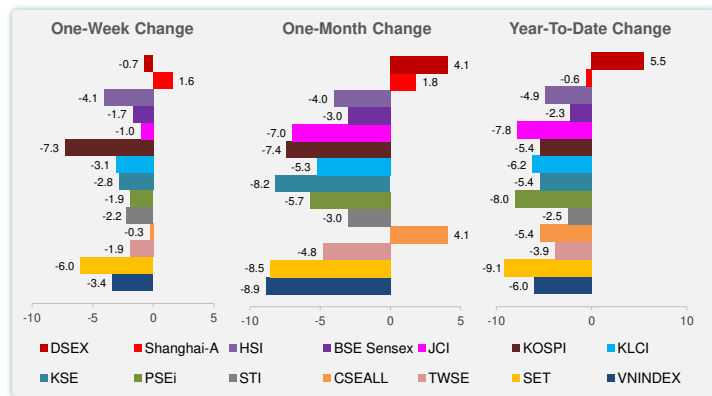


Note: Negative/Decreasing values indicate depreciation of local currency, and positive/increasing values indicate appreciation.
Source: Bloomberg.



Source: Bloomberg.

	Latest Closing	% change from Previous Day	% change from 01-Jan-20
US Dow Jones Ind Avg	27,960.80	-3.56	-2.02
US NASDAQ	9,221.28	-3.71	2.77
US S&P 500	3,225.89	-3.35	-0.15
UK FTSE 100	7,156.83	-3.34	-5.11
EURO STOXX 50	3,647.98	-4.01	-2.59
Japan NIKKEI 225	23,386.74	0.00	-1.14
Bangladesh DSEX	4,698.90	-0.72	5.52
PRC Shanghai Comp.	3,031.23	-0.28	-0.62
Hong Kong, China HSI	26,820.88	-1.79	-4.86
India BSE Sensex	40,363.23	-1.96	-2.28
Indonesia JCI	5,807.05	-1.28	-7.82
Korea, Rep. of KOSPI	2,079.04	-3.87	-5.40
Malaysia KLCI	1,490.06	-2.69	-6.21
Pakistan KSE 100	39,143.73	-2.75	-5.45
Philippines PSEi	7,187.44	-2.47	-8.03
Singapore STI	3,142.20	-1.22	-2.50
Sri Lanka CSEALL	5,797.30	-0.57	-5.42
Taipei, China TWSE	11,534.87	-1.30	-3.85
Thailand SET	1,435.56	-3.98	-9.13
Viet Nam VNINDEX	903.34	-3.19	-6.00



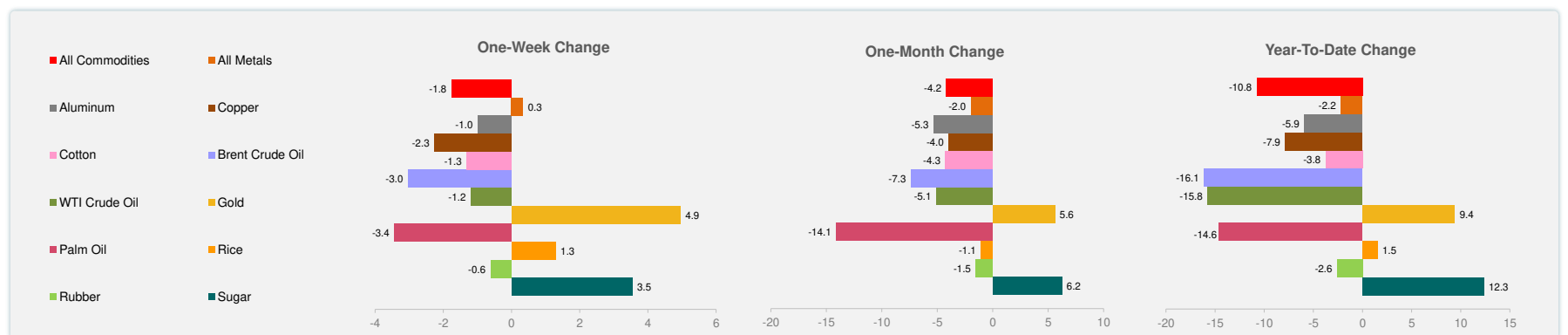
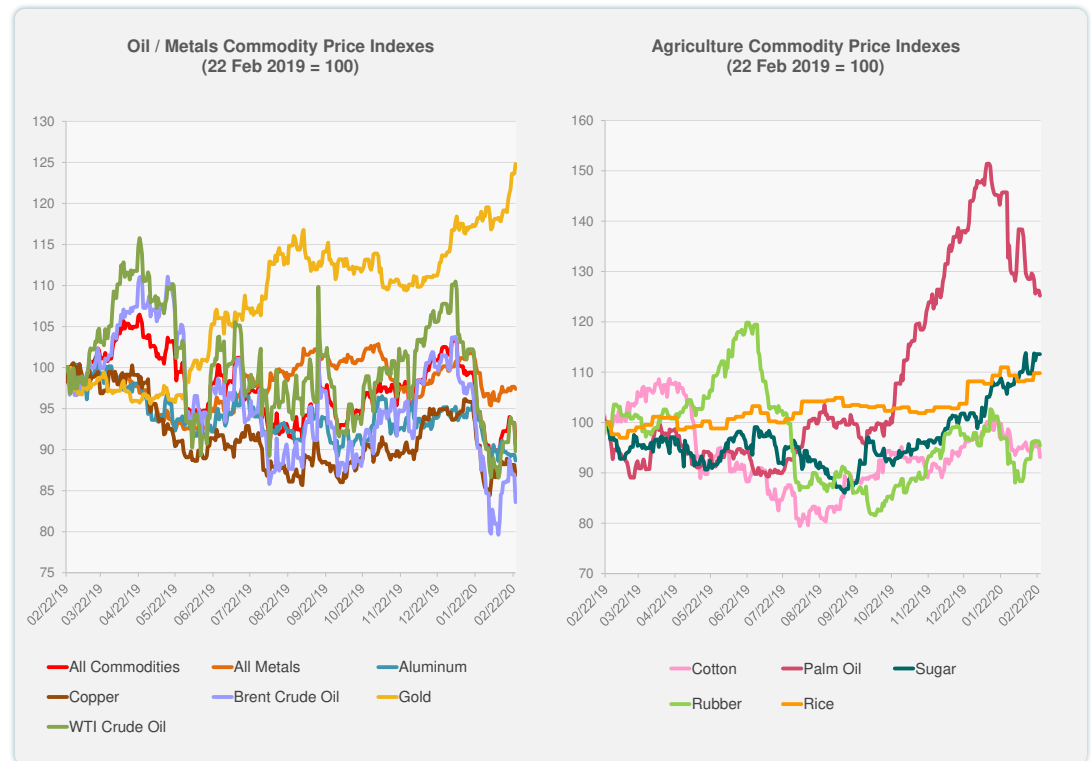
Source: Bloomberg.



Source: Bloomberg.

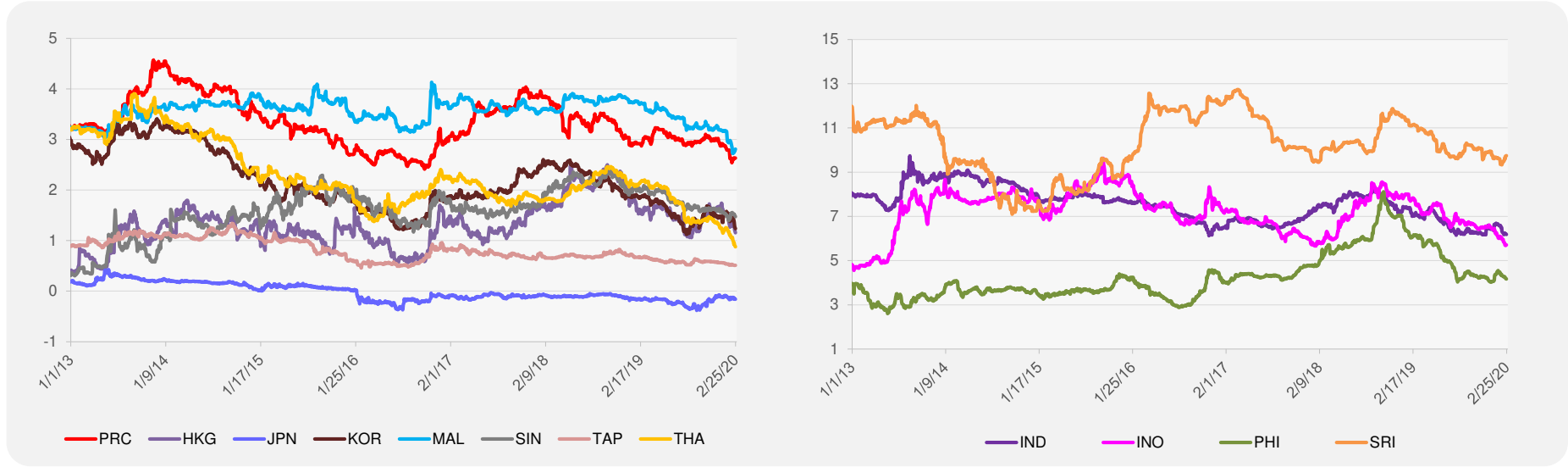
	Unit	Latest Closing	% change from Previous Day	% change from 01-Jan-20
S&P All Commodities	US\$	389.26	-2.81	-10.76
S&P All Metals	US\$	212.75	-0.27	-2.21
Aluminum	US\$/metric ton	1,675.75	-0.80	-5.92
Copper	US\$/metric ton	5,665.75	-1.40	-7.86
Cotton	US cents/lb	63.81	-2.21	-3.76
Brent Crude Oil	US\$/barrel	55.61	-3.89	-16.14
WTI Crude Oil	US\$/barrel	51.43	-3.65	-15.77
Gold	US\$/troy oz	1,659.38	0.97	9.36
Palm Oil	US\$/metric tonne	631.61	-0.83	-14.60
Rice ¹	US\$/metric ton	470.00	0.00	1.51
Rubber ²	US\$/kg	162.00	-0.92	-2.59
Sugar	US cents/lb	15.21	0.00	12.33

¹ Latest closing price from 19 February 2020.
² Singapore Exchange, Ribbed Smoked Sheet Rubber.

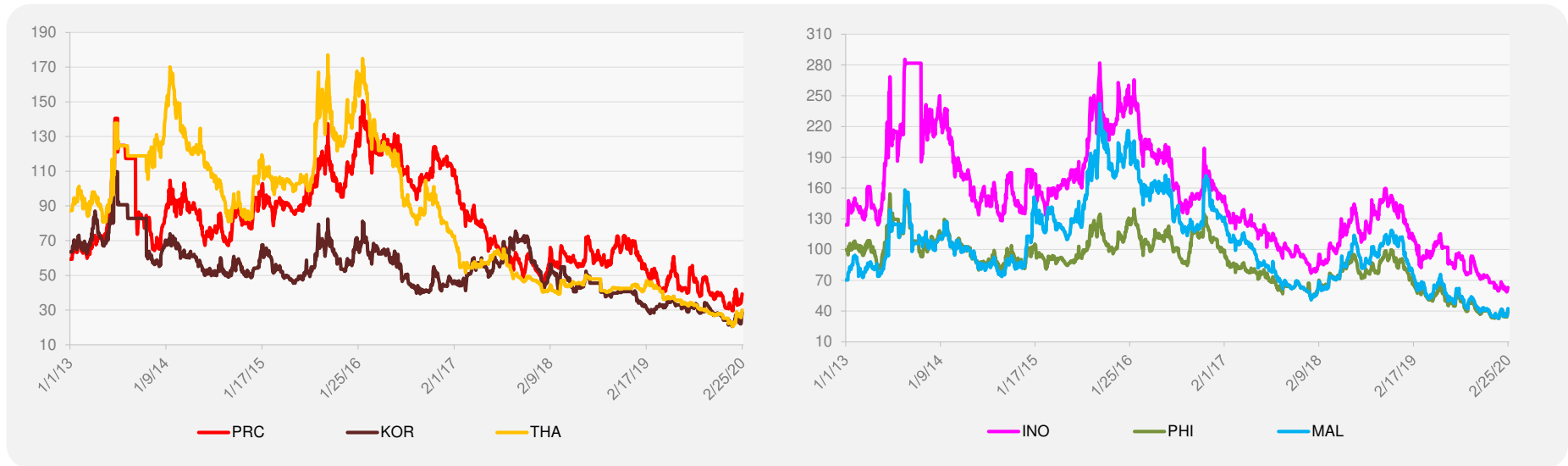


Source: Bloomberg.

5-YEAR LOCAL CURRENCY GOVERNMENT BOND YIELDS (%)



5-YEAR CREDIT DEFAULT SWAP¹



¹ In USD and based on sovereign bonds.
Source: Bloomberg.